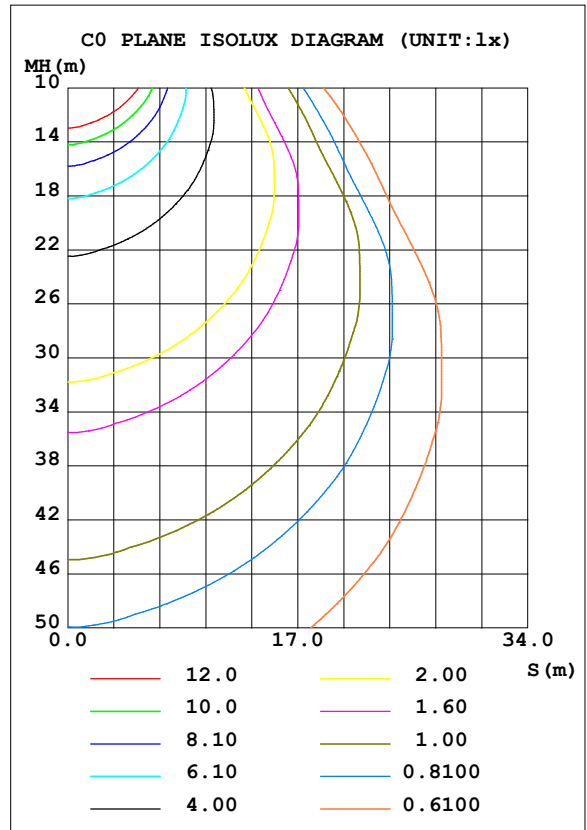
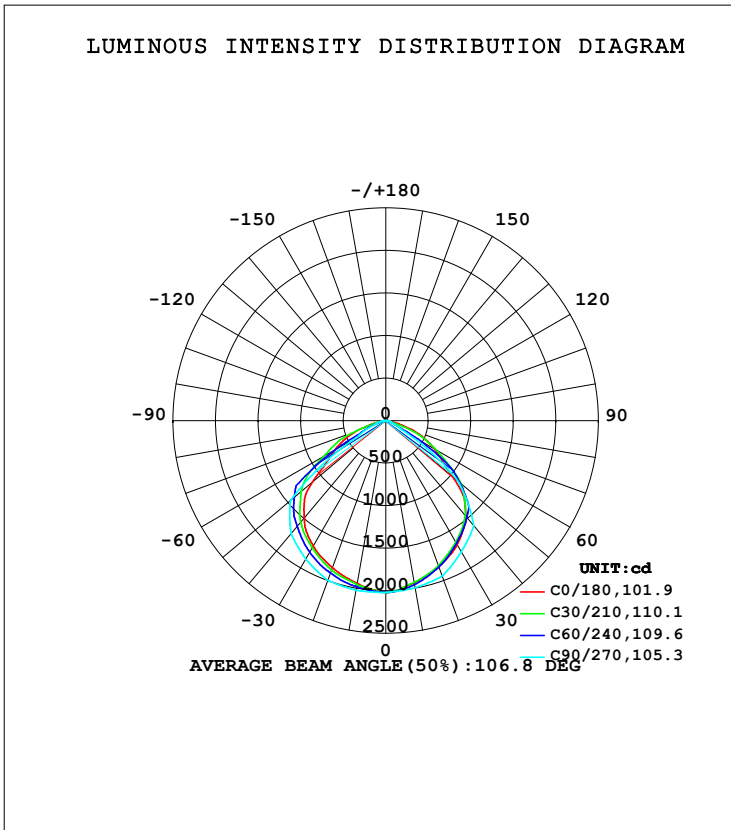


LUMINAIRE PHOTOMETRIC TEST REPORT

Test:U:119.99V I:0.3365A P:39.972W PF:0.9900 Freq:59.98Hz Lamp Flux:5034.93x1 lm		
NAME: LED Explosion-proof Flood Light	TYPE:Floodlight	WEIGHT:N/A
SPEC.:40W	DIM.: N/A	SERIAL No.:N/A
MFR.: LDPI Inc.,Ltd	SUR.:N/A	Shielding Angle:N/A

DATA OF LAMP		PHOTOMETRIC DATA Eff: 125.96 lm/W			
MODEL	LEXS-L1-V1-5-V110-C	I <sub>max</sub> (cd)	2024	S/MH (C0/180)	1.26
NOMINAL POWER (W)	40	LOR (%)	100.0	S/MH (C90/270)	1.38
RATED VOLTAGE (V)	120	TOTAL FLUX (lm)	5034.9	η UP, DN (C0-180)	0.0, 47.3
NOMINAL FLUX (lm)	5034.93	CIE CLASS	DIRECT	η UP, DN (C180-360)	0.0, 52.7
LAMPS INSIDE	1	η up (%)	0.0	CIBSE SHR NOM	1.50
TEST VOLTAGE (V)	120	η down (%)	100.0	CIBSE SHR MAX	1.55



H(β) Range:-90 - 90DEG  
 H(β) Interval: 1.0DEG  
 Test Speed: HIGH  
 Temperature:25.3DEG  
 Operators:CL  
 Test Date:07 December 2018

V(B) Range:-80 - 80DEG  
 V(B) Interval: 5.0DEG  
 Test System:EVERFINE GO-2000A\_V1 SYSTEM V2.0.366  
 Humidity:65.0%  
 Test Distance:6.010m [K=1.0000]  
 Remarks:

## ZONAL FLUX DIAGRAM

## ZONAL FLUX DIAGRAM:

$\gamma$	C0	C45	C90	C135	C180	C225	C270	C315	$\gamma$	$\Phi$ zone	$\Phi$ total	%lum, lamp
10	1934	1937	1994	1944	1941	1969	2023	1961	0- 10	189.5	189.5	3.76,3.76
20	1826	1812	1944	1825	1839	1883	1997	1874	10- 20	542.1	731.6	14.5,14.5
30	1681	1653	1779	1674	1704	1756	1880	1734	20- 30	830.9	1562	31,31
40	1471	1461	1612	1495	1488	1590	1732	1566	30- 40	1026	2589	51.4,51.4
50	1021	1198	1113	1238	1126	1379	1463	1350	40- 50	1082	3671	72.9,72.9
60	656.0	587.1	212.7	630.1	697.1	917.8	394.6	867.7	50- 60	833.9	4505	89.5,89.5
70	353.6	96.59	69.66	98.16	386.4	224.4	136.3	265.9	60- 70	390.1	4895	97.2,97.2
80	62.57	22.41	32.88	22.09	59.28	41.69	47.35	43.14	70- 80	126.0	5021	99.7,99.7
90	1.092	0	0	0	0.8535	0	0	0	80- 90	13.93	5035	100,100
100									90-100			
110									100-110			
120									110-120			
130									120-130			
140									130-140			
150									140-150			
160									150-160			
170									160-170			
180									170-180			
DEG	LUMINOUS INTENSITY:cd									UNIT:lm		

Conical surface Flux(90deg): 3135.4 lm

%lum = 62.3%

%lamp = 62.3%

Conical surface Flux(120deg): 4504.9 lm

%lum = 89.5%

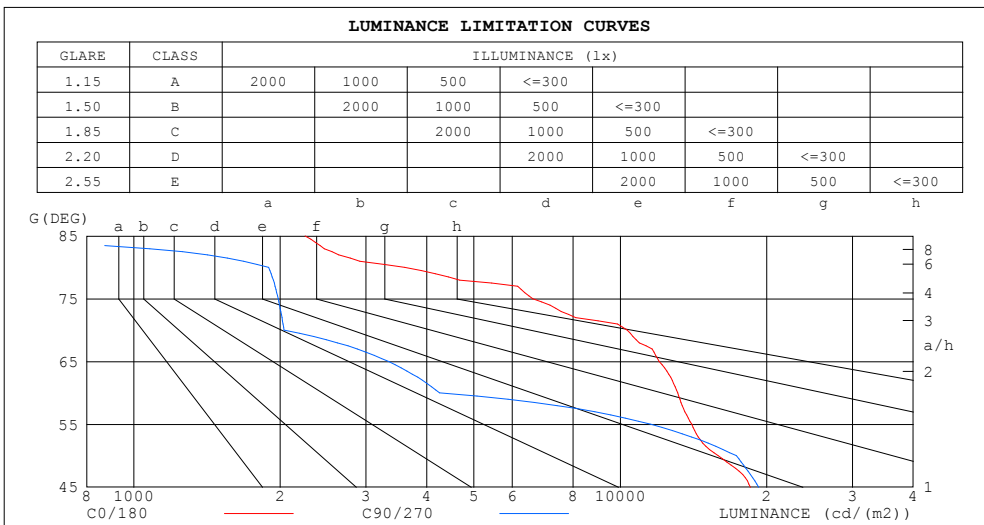
%lamp = 89.5%

H( $\beta$ ) Range:-90 - 90DEG  
H( $\beta$ ) Interval: 1.0DEG  
Test Speed: HIGH  
Temperature:25.3DEG  
Operators:CL  
Test Date:07 December 2018

V(B) Range:-80 - 80DEG  
V(B) Interval: 5.0DEG  
Test System:EVERFINE GO-2000A\_V1 SYSTEM V2.0.366  
Humidity:65.0%  
Test Distance:6.010m [K=1.0000]  
Remarks:

LUMINANCE LIMITATION CURVES

Test:U:119.99V I:0.3365A P:39.972W PF:0.9900 Freq:59.98Hz Lamp Flux:5034.93x1 lm		
NAME: LED Explosion-proof Flood Light	TYPE:Floodlight	WEIGHT:N/A
SPEC.:40W	DIM.: N/A	SERIAL No.:N/A
MFR.: LDPI Inc.,Ltd	SUR.:N/A	Shielding Angle:N/A



LUMINANCE cd/(m2)		
G (DEG)	C0/180	C90/270
85	2251	0
80	3603	1894
75	6604	1981
70	10338	2037
65	12028	3341
60	13121	4255
55	14020	11555
50	15884	17312
45	18510	19270

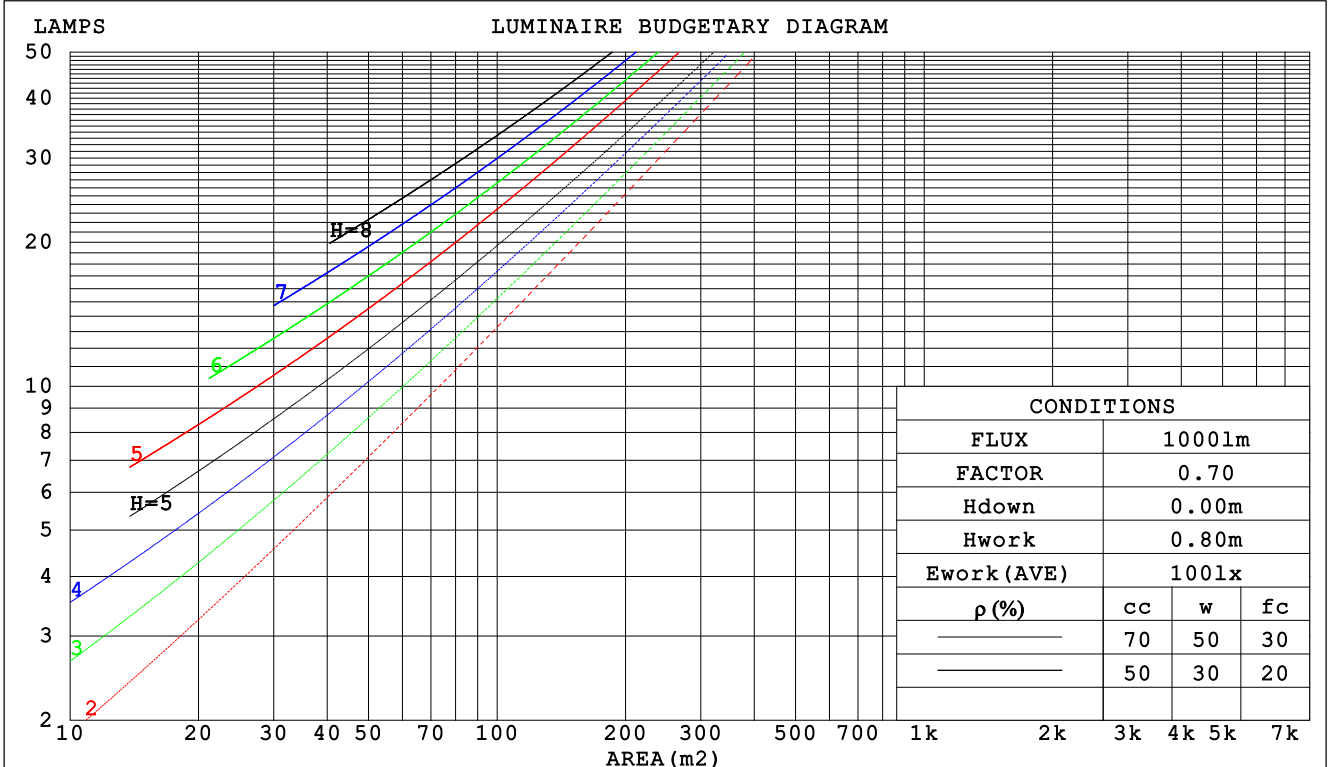
H( $\beta$ ) Range:-90 - 90DEG  
 H( $\beta$ ) Interval: 1.0DEG  
 Test Speed: HIGH  
 Temperature:25.3DEG  
 Operators:CL  
 Test Date:07 December 2018

V(B) Range:-80 - 80DEG  
 V(B) Interval: 5.0DEG  
 Test System:EVERFINE GO-2000A\_V1 SYSTEM V2.0.366  
 Humidity:65.0%  
 Test Distance:6.010m [K=1.0000]  
 Remarks:

CU AND LUMINAIRE BUDGETARY ESTIMATE DIAGRAM

Test:U:119.99V I:0.3365A P:39.972W PF:0.9900 Freq:59.98Hz Lamp Flux:5034.93x1 lm		
NAME: LED Explosion-proof Flood Light	TYPE:Floodlight	WEIGHT:N/A
SPEC.:40W	DIM.: N/A	SERIAL No.:N/A
MFR.: LDPI Inc.,Ltd	SUR.:N/A	Shielding Angle:N/A

$\rho_{cc}$	80%			70%			50%			30%			10%			0
$\rho_w$	50%	30%	10%	50%	30%	10%	50%	30%	10%	50%	30%	10%	50%	30%	10%	0
$\rho_{fc}$	20%			20%			20%			20%			20%			0
RCR	RCR:Room Cavity Ratio						Coefficients of Utilization(CU)									
0.0	1.19	1.19	1.19	1.16	1.16	1.16	1.11	1.11	1.11	1.06	1.06	1.06	1.02	1.02	1.02	1.00
1.0	1.07	1.03	.00	1.04	1.01	.98	1.00	.97	.95	.96	.94	.92	.93	.91	.89	.87
2.0	.94	.88	.83	.93	.87	.82	.89	.84	.81	.86	.82	.79	.83	.80	.77	.75
3.0	.84	.76	.71	.82	.75	.70	.79	.74	.69	.77	.72	.68	.74	.70	.67	.64
4.0	.75	.67	.61	.74	.66	.60	.71	.65	.59	.69	.63	.59	.67	.62	.58	.56
5.0	.67	.59	.53	.66	.58	.52	.64	.57	.52	.62	.56	.51	.60	.55	.51	.49
6.0	.61	.52	.46	.60	.52	.46	.58	.51	.46	.56	.50	.45	.55	.49	.45	.43
7.0	.55	.47	.41	.54	.46	.41	.53	.46	.40	.51	.45	.40	.50	.44	.40	.38
8.0	.50	.42	.36	.50	.42	.36	.48	.41	.36	.47	.41	.36	.46	.40	.36	.34
9.0	.46	.38	.33	.46	.38	.33	.44	.37	.33	.43	.37	.32	.42	.37	.32	.31
10.0	.43	.35	.30	.42	.35	.30	.41	.34	.30	.40	.34	.29	.39	.33	.29	.28



H( $\beta$ ) Range:-90 - 90DEG  
 H( $\beta$ ) Interval: 1.0DEG  
 Test Speed: HIGH  
 Temperature:25.3DEG  
 Operators:CL  
 Test Date:07 December 2018

V(B) Range:-80 - 80DEG  
 V(B) Interval: 5.0DEG  
 Test System:EVERFINE GO-2000A\_V1 SYSTEM V2.0.366  
 Humidity:65.0%  
 Test Distance:6.010m [K=1.0000]  
 Remarks:

WEC AND CCEC

Test:U:119.99V I:0.3365A P:39.972W PF:0.9900 Freq:59.98Hz Lamp Flux:5034.93x1 lm		
NAME: LED Explosion-proof Flood Light	TYPE:Floodlight	WEIGHT:N/A
SPEC.:40W	DIM.: N/A	SERIAL No.:N/A
MFR.: LDPI Inc.,Ltd	SUR.:N/A	Shielding Angle:N/A

ρcc	80%			70%			50%			30%			10%			0
ρw	50%	30%	10%	50%	30%	10%	50%	30%	10%	50%	30%	10%	50%	30%	10%	0
ρfc	20%			20%			20%			20%			20%			0
RCR	RCR:Room Cavity Ratio						Wall Exitance Coefficients (WEC)									
0.0																
1.0	.259	.148	.047	.252	.144	.046	.239	.137	.044	.228	.131	.042	.216	.125	.040	
2.0	.254	.139	.043	.248	.136	.042	.236	.131	.041	.226	.127	.040	.216	.122	.039	
3.0	.241	.128	.038	.236	.126	.038	.226	.122	.037	.217	.119	.036	.208	.115	.036	
4.0	.227	.118	.035	.223	.116	.034	.214	.113	.034	.205	.110	.033	.198	.107	.033	
5.0	.213	.109	.031	.209	.107	.031	.201	.105	.031	.194	.102	.030	.187	.100	.030	
6.0	.200	.100	.029	.197	.099	.029	.190	.097	.028	.183	.095	.028	.177	.093	.028	
7.0	.188	.093	.026	.185	.092	.026	.179	.090	.026	.173	.089	.026	.167	.087	.026	
8.0	.177	.087	.024	.174	.086	.024	.169	.084	.024	.163	.083	.024	.158	.081	.024	
9.0	.167	.081	.023	.164	.080	.022	.159	.079	.022	.154	.077	.022	.150	.076	.022	
10.0	.158	.076	.021	.155	.075	.021	.151	.074	.021	.146	.073	.021	.142	.072	.021	

ρcc	80%			70%			50%			30%			10%			0
ρw	50%	30%	10%	50%	30%	10%	50%	30%	10%	50%	30%	10%	50%	30%	10%	0
ρfc	20%			20%			20%			20%			20%			0
RCR	RCR:Room Cavity Ratio						Ceiling Cavity Exitance Coefficients (CCEC)									
0.0	.190	.190	.190	.163	.163	.163	.111	.111	.111	.064	.064	.064	.020	.020	.020	
1.0	.177	.157	.138	.151	.134	.119	.103	.092	.082	.060	.054	.048	.019	.017	.015	
2.0	.167	.132	.103	.143	.114	.089	.098	.079	.062	.057	.046	.036	.018	.015	.012	
3.0	.159	.114	.078	.136	.098	.068	.094	.068	.048	.054	.040	.028	.017	.013	.009	
4.0	.151	.100	.062	.130	.087	.053	.089	.061	.038	.052	.035	.022	.017	.012	.007	
5.0	.144	.090	.050	.124	.078	.043	.085	.054	.031	.049	.032	.018	.016	.010	.006	
6.0	.138	.081	.041	.118	.071	.036	.082	.049	.025	.047	.029	.015	.015	.009	.005	
7.0	.131	.075	.035	.113	.065	.030	.078	.045	.021	.045	.027	.013	.015	.009	.004	
8.0	.125	.069	.030	.108	.060	.026	.075	.042	.018	.043	.025	.011	.014	.008	.004	
9.0	.120	.064	.026	.103	.055	.023	.071	.039	.016	.042	.023	.010	.013	.008	.003	
10.0	.114	.060	.023	.099	.052	.020	.068	.036	.014	.040	.022	.009	.013	.007	.003	

H(β) Range:-90 - 90DEG  
H(β) Interval: 1.0DEG  
Test Speed: HIGH  
Temperature:25.3DEG  
Operators:CL  
Test Date:07 December 2018

V(B) Range:-80 - 80DEG  
V(B) Interval: 5.0DEG  
Test System:EVERFINE GO-2000A\_V1 SYSTEM V2.0.366  
Humidity:65.0%  
Test Distance:6.010m [K=1.0000]  
Remarks:

## UGR(Unified Glare Rating) Table

Test:U:119.99V I:0.3365A P:39.972W PF:0.9900 Freq:59.98Hz Lamp Flux:5034.93x1 lm										
NAME: LED Explosion-proof Flood Light					TYPE:Floodlight			WEIGHT:N/A		
SPEC.:40W					DIM.: N/A			SERIAL No.:N/A		
MFR.: LDPI Inc.,Ltd					SUR.:N/A			Shielding Angle:N/A		
ceiling/cavity	0.7	0.7	0.5	0.5	0.3	0.7	0.7	0.5	0.5	0.3
walls	0.5	0.3	0.5	0.3	0.3	0.5	0.3	0.5	0.3	0.3
working plane	0.2	0.2	0.2	0.2	0.2	0.2	0.2	0.2	0.2	0.2
Room dimensions	Viewed crosswise					Viewed endwise				
x = 2H y = 2H	16.5	17.9	16.8	18.1	18.3	15.3	16.7	15.6	16.9	17.1
3H	17.6	18.9	17.8	19.1	19.3	15.2	16.5	15.5	16.7	16.9
4H	17.8	19.0	18.1	19.3	19.5	15.1	16.4	15.4	16.6	16.8
6H	17.9	19.0	18.2	19.3	19.5	15.1	16.2	15.4	16.5	16.8
8H	17.8	18.9	18.2	19.2	19.5	15.0	16.1	15.4	16.4	16.7
12H	17.8	18.8	18.1	19.1	19.4	15.0	16.0	15.3	16.3	16.6
4H 2H	16.7	17.9	17.0	18.2	18.4	15.5	16.8	15.9	17.0	17.3
3H	17.8	18.9	18.1	19.1	19.4	15.5	16.5	15.8	16.8	17.1
4H	18.1	19.0	18.4	19.4	19.7	15.4	16.4	15.8	16.7	17.0
6H	18.2	19.0	18.6	19.3	19.7	15.4	16.2	15.8	16.6	16.9
8H	18.1	18.9	18.6	19.3	19.7	15.4	16.1	15.8	16.5	16.9
12H	18.1	18.8	18.5	19.2	19.6	15.3	16.0	15.7	16.4	16.8
8H 4H	18.0	18.7	18.4	19.1	19.5	15.4	16.2	15.8	16.5	16.9
6H	18.0	18.7	18.5	19.1	19.5	15.4	16.0	15.8	16.4	16.8
8H	18.0	18.6	18.5	19.0	19.5	15.3	15.9	15.8	16.3	16.8
12H	18.0	18.5	18.5	18.9	19.4	15.3	15.8	15.8	16.2	16.7
12H 4H	17.9	18.6	18.3	19.0	19.4	15.3	16.1	15.8	16.4	16.8
6H	18.0	18.6	18.5	19.0	19.4	15.3	15.9	15.8	16.3	16.8
8H	18.0	18.5	18.5	18.9	19.4	15.3	15.8	15.8	16.2	16.7
Variations with the observer position at spacings:										
S = 1.0H	+ 0.4 / - 0.5					+ 0.7 / - 1.0				
1.5H	+ 0.7 / - 0.9					+ 0.5 / - 1.0				
2.0H	+ 0.6 / - 1.0					+ 2.1 / - 6.6				

CIE Pub.117, 5035 lm Total Lamp Luminous Flux Correct ( $8\log(F/F_0) = 5.6$ )

H( $\beta$ ) Range:-90 - 90DEG  
H( $\beta$ ) Interval: 1.0DEG  
Test Speed: HIGH  
Temperature:25.3DEG  
Operators:CL  
Test Date:07 December 2018

V(B) Range:-80 - 80DEG  
V(B) Interval: 5.0DEG  
Test System:EVERFINE GO-2000A\_V1 SYSTEM V2.0.366  
Humidity:65.0%  
Test Distance:6.010m [K=1.0000]  
Remarks:

## UTILIZATION FACTORS TABLE

Test:U:119.99V I:0.3365A P:39.972W PF:0.9900 Freq:59.98Hz Lamp Flux:5034.93x1 lm		
NAME: LED Explosion-proof Flood Light	TYPE:Floodlight	WEIGHT:N/A
SPEC.:40W	DIM.: N/A	SERIAL No.:N/A
MFR.: LDPI Inc.,Ltd	SUR.:N/A	Shielding Angle:N/A

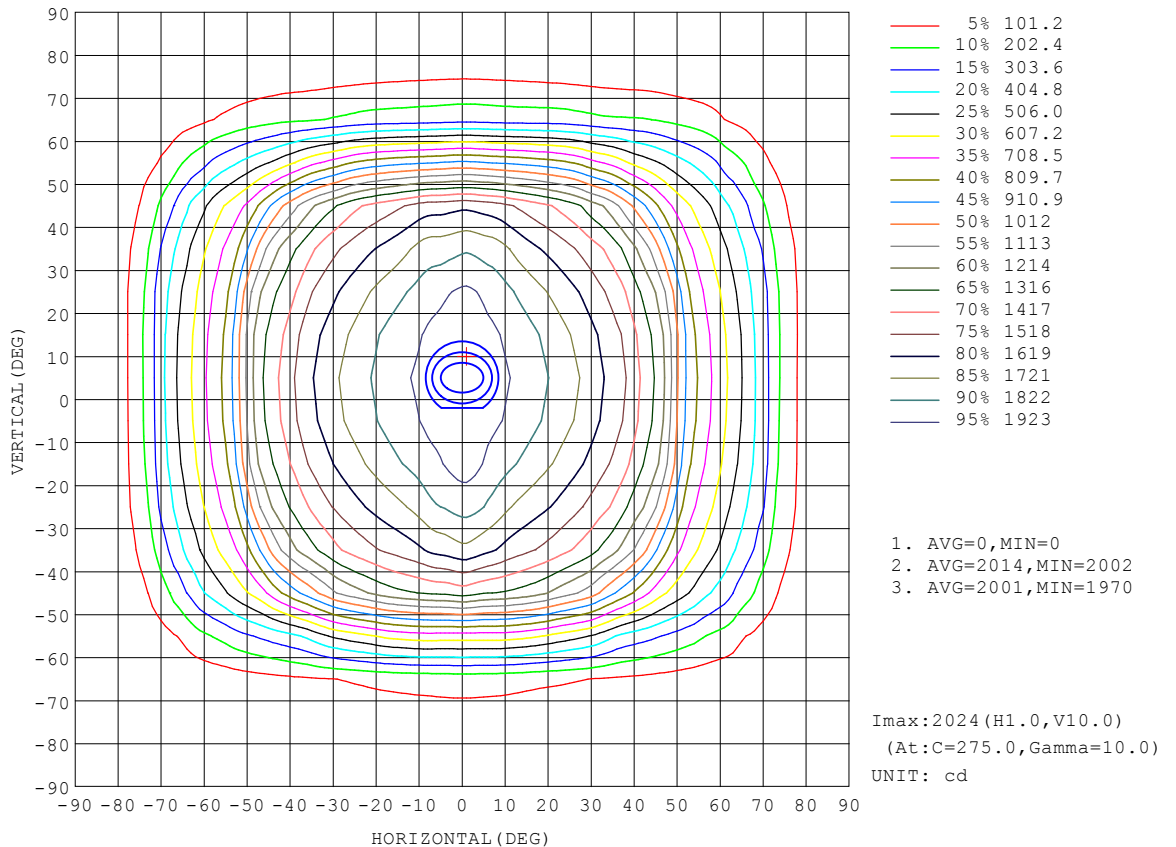
REFLECTANCE										
Ceiling	0.8	0.8	0.8	0.7	0.7	0.7	0.5	0.5	0.5	0
Walls	0.7	0.5	0.3	0.7	0.5	0.3	0.7	0.5	0.3	0
Working plane	0.2	0.2	0.2	0.2	0.2	0.2	0.2	0.2	0.2	0
ROOM INDEX	UTILIZATION FACTORS (PERCENT) $k(RI) \times RCR = 5$									
k = 0.60	61	50	43	60	49	43	59	49	43	36
0.80	71	61	54	70	60	54	69	59	53	47
1.00	80	70	64	79	70	64	77	71	63	56
1.25	88	78	72	86	78	72	84	76	71	64
1.50	92	84	78	91	83	77	88	81	76	69
2.00	99	92	86	97	90	85	94	88	84	77
2.50	102	96	90	100	94	89	97	92	88	80
3.00	105	99	95	103	98	94	99	95	91	84
4.00	108	104	100	106	102	98	102	99	96	87
5.00	110	106	103	108	104	101	104	101	98	89
ROOM INDEX	UF(total)									Direct
According to DIN EN 13032-2 2004			Suspended				SHRNM = 1.25			

H( $\beta$ ) Range:-90 - 90DEG  
H( $\beta$ ) Interval: 1.0DEG  
Test Speed: HIGH  
Temperature:25.3DEG  
Operators:CL  
Test Date:07 December 2018

V(B) Range:-80 - 80DEG  
V(B) Interval: 5.0DEG  
Test System:EVERFINE GO-2000A\_V1 SYSTEM V2.0.366  
Humidity:65.0%  
Test Distance:6.010m [K=1.0000]  
Remarks:

ISOCANDELA DIAGRAM

Test:U:119.99V I:0.3365A P:39.972W PF:0.9900 Freq:59.98Hz Lamp Flux:5034.93x1 lm		
NAME: LED Explosion-proof Flood Light	TYPE:Floodlight	WEIGHT:N/A
SPEC.:40W	DIM.: N/A	SERIAL No.:N/A
MFR.: LDPI Inc.,Ltd	SUR.:N/A	Shielding Angle:N/A



H( $\beta$ ) Range:-90 - 90DEG  
 H( $\beta$ ) Interval: 1.0DEG  
 Test Speed: HIGH  
 Temperature:25.3DEG  
 Operators:CL  
 Test Date:07 December 2018

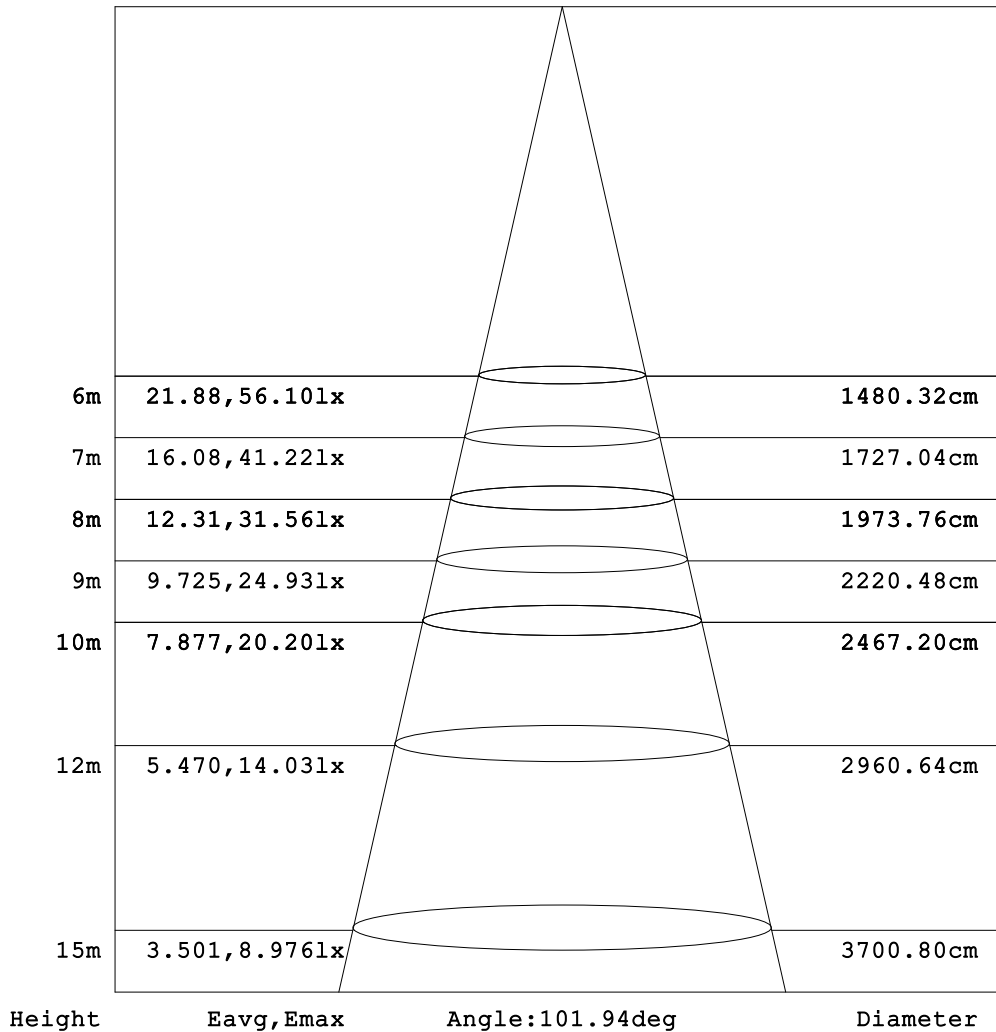
V(B) Range:-80 - 80DEG  
 V(B) Interval: 5.0DEG  
 Test System:EVERFINE GO-2000A\_V1 SYSTEM V2.0.366  
 Humidity:65.0%  
 Test Distance:6.010m [K=1.0000]  
 Remarks:



**AAI Figure**

Test:U:119.99V I:0.3365A P:39.972W PF:0.9900 Freq:59.98Hz Lamp Flux:5034.93x1 lm		
NAME: LED Explosion-proof Flood Light	TYPE:Floodlight	WEIGHT:N/A
SPEC.:40W	DIM.: N/A	SERIAL No.:N/A
MFR.: LDPI Inc.,Ltd	SUR.:N/A	Shielding Angle:N/A

Flux out:3774 lm



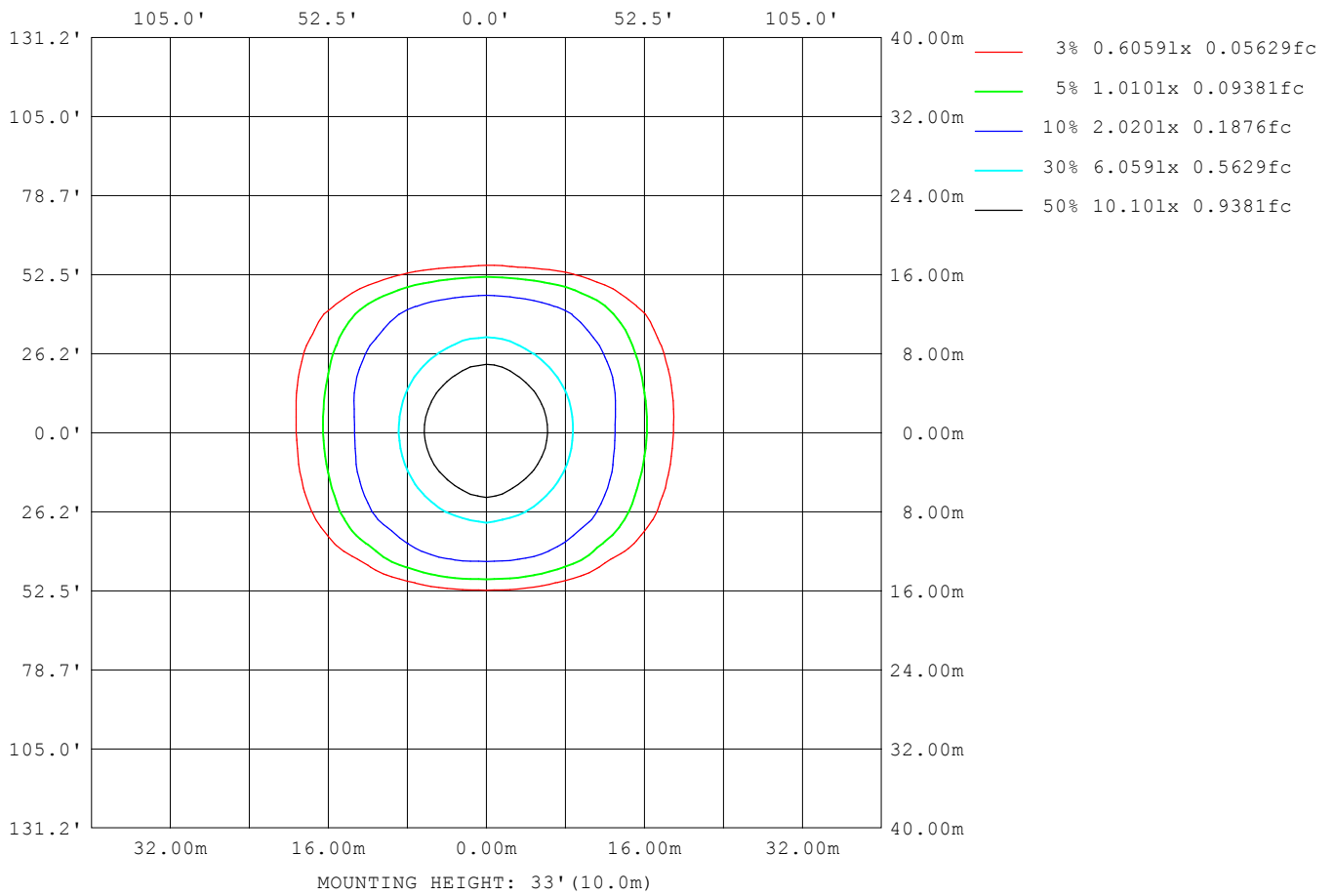
Note:The Curves indicate the illuminated area and the average illumination when the luminaire is at different distance.

H(β) Range:-90 - 90DEG  
 H(β) Interval: 1.0DEG  
 Test Speed: HIGH  
 Temperature:25.3DEG  
 Operators:CL  
 Test Date:07 December 2018

V(B) Range:-80 - 80DEG  
 V(B) Interval: 5.0DEG  
 Test System:EVERFINE GO-2000A\_V1 SYSTEM V2.0.366  
 Humidity:65.0%  
 Test Distance:6.010m [K=1.0000]  
 Remarks:

ISOLUX DIAGRAM

Test:U:119.99V I:0.3365A P:39.972W PF:0.9900 Freq:59.98Hz Lamp Flux:5034.93x1 lm		
NAME: LED Explosion-proof Flood Light	TYPE:Floodlight	WEIGHT:N/A
SPEC.:40W	DIM.: N/A	SERIAL No.:N/A
MFR.: LDPI Inc.,Ltd	SUR.:N/A	Shielding Angle:N/A



H( $\beta$ ) Range:-90 - 90DEG  
H( $\beta$ ) Interval: 1.0DEG  
Test Speed: HIGH  
Temperature:25.3DEG  
Operators:CL  
Test Date:07 December 2018

V(B) Range:-80 - 80DEG  
V(B) Interval: 5.0DEG  
Test System:EVERFINE GO-2000A\_V1 SYSTEM V2.0.366  
Humidity:65.0%  
Test Distance:6.010m [K=1.0000]  
Remarks:

**LED Avg.L Report**

Test:U:119.99V I:0.3365A P:39.972W PF:0.9900 Freq:59.98Hz Lamp Flux:5034.93x1 lm		
NAME: LED Explosion-proof Flood Light	TYPE:Floodlight	WEIGHT:N/A
SPEC.:40W	DIM.: N/A	SERIAL No.:N/A
MFR.: LDPI Inc.,Ltd	SUR.:N/A	Shielding Angle:N/A

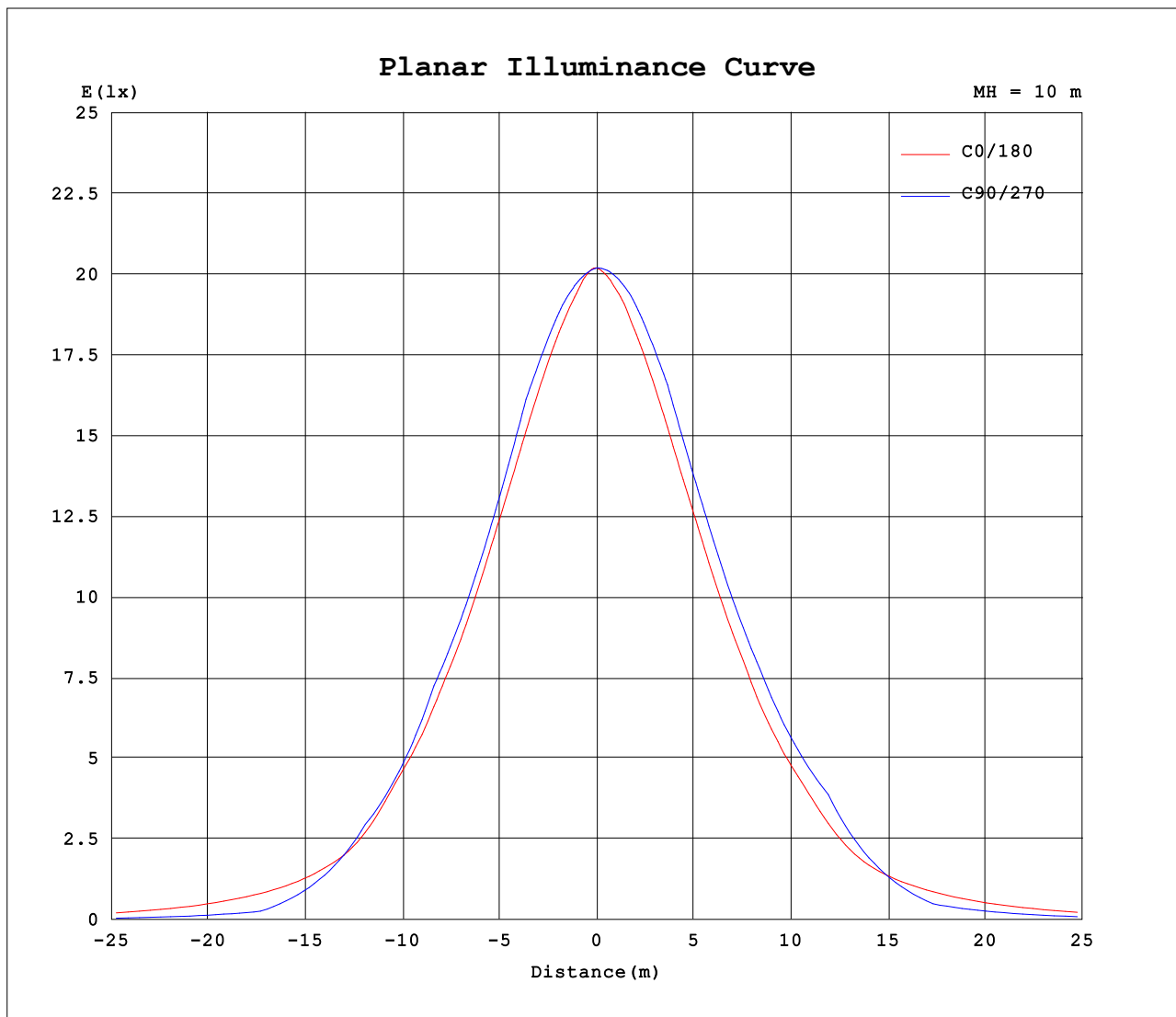
AvgL	cd/m2
L_0~180 (65) av	12468
L_0~180 (75) av	6645
L_0~180 (85) av	2069
L_90~270 (65) av	4811
L_90~270 (75) av	2764
L_90~270 (85) av	0
L_45 (65) av	9379
L_45 (75) av	2595
L_45 (85) av	826

Standard: GB/T 29293-2012

H( $\beta$ ) Range:-90 - 90DEG  
H( $\beta$ ) Interval: 1.0DEG  
Test Speed: HIGH  
Temperature:25.3DEG  
Operators:CL  
Test Date:07 December 2018

V(B) Range:-80 - 80DEG  
V(B) Interval: 5.0DEG  
Test System:EVERFINE GO-2000A\_V1 SYSTEM V2.0.366  
Humidity:65.0%  
Test Distance:6.010m [K=1.0000]  
Remarks:

Planar Illuminance Curve



H( $\beta$ ) Range:-90 - 90DEG  
 H( $\beta$ ) Interval: 1.0DEG  
 Test Speed: HIGH  
 Temperature:25.3DEG  
 Operators:CL  
 Test Date:07 December 2018

V(B) Range:-80 - 80DEG  
 V(B) Interval: 5.0DEG  
 Test System:EVERFINE GO-2000A\_V1 SYSTEM V2.0.366  
 Humidity:65.0%  
 Test Distance:6.010m [K=1.0000]  
 Remarks:







