

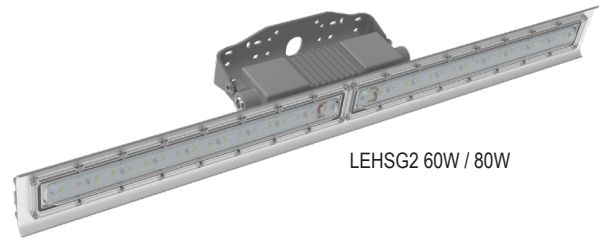


LEHSG2

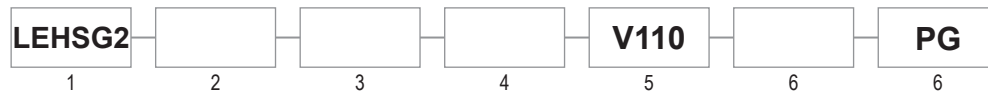
HAZARDOUS LOCATION

Chemical Processing • Industrial • Oil / Gas • Shipyards / Marine • Water Treatment

The LEHSG2 is designed and listed for hazardous, marine, and wet locations. This product is ideal for replacing High Pressure Sodium (HPS) and Metal Halide(MH) fixtures for increased energy savings and maintenance.



LEHSG2 60W / 80W



1 SERIES	2 SOURCE	3 VOLTAGE	4 CCT	5 OPTIC / BEAM	6 LENS	7 COLOR	
LEHSG2	L1*: 2Ft. / 30W L2: 2Ft. / 40W L3: 4Ft. / 60W L4: 4Ft. / 80W *L1 unavailable in 347-480VAC	V1: 120-277VAC (50/60Hz) V2: 347-480VAC (50/60Hz)	3: 3,000K 4: 4,000K 5: 5,000K	V110: 110° TYPE V	C: Clear D: Diffused	PG: Gray	Product comes standard with Yoke bracket pre-installed (Powder Coated Stainless Steel) (3) 3/4" NPT Hubs 10Kv surge protector built-in 3Ft. 3-Wire whip, factory installed

CERTIFICATIONS

UL844 / CSA-C22.2 No.137 (Hazardous)
CI D2, Grps A, B, C, D
CII D1, Grps E, F, G
CII D2, Grps F, G
CIII D1
Simultaneous Presence
T-Code: CI D2=T4A / CII D1=T4A
UL1598 / CSA-C22.2 No.250 (Wet/Damp)
UL1598A (Marine Outside)
-40°C to 65°C Ambient (CID2 Only)
-40°C to 50°C Ambient (CIID1 Only)
IP66
FCC

CONSTRUCTION

Powder coat gray
All exposed fasteners are stainless steel
Polycarbonate lens
Light weight compact design
(3) 3/4" NPT hub locations
Weights: 2Ft.-14 lbs. / 4Ft.-19 lbs.

ELECTRICAL

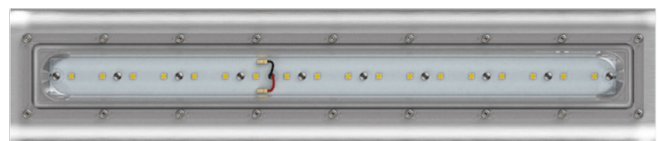
120-277 / 347-480VAC
10Kv surge protector built in - Standard
3Ft. 3-Wire whip standard, factory installed

FEATURES

High lumen output up to 150 Lm/W
5G Vibration rating
Thermal shock and impact resistant lens
0-10V Dimming Capability
Lumen Maintenance (L70) >54,000 hrs. (reported)
CRI >70
Mounting: Pole, Pendent, Wall/Flood, Ceiling, Hanging
30° Yoke Adjustments (180° total)
5 Year Warranty

PERFORMANCE

Source	Voltage (VAC) 50/60Hz	Input Current (A)	Wattage (W)	CCT	Lumen Output* (Lm)	
					Clear Lens	Diffused Lens
L1	120-277	.25 - .11	30	3,000K, 4,000K	4,160	3,710
				5,000K	4,430	3,950
L2	120-277	.33 - .14	40	3,000K, 4,000K	5,440	4,860
	347-480	.11 - .08		5,000K	5,790	5,170
L3	120-277	.50 - .22	60	3,000K, 4,000K	8,630	7,760
	347-480	.17 - .13		5,000K	9,180	8,260
L4	120-277	.67 - .29	80	3,000K, 4,000K	11,310	10,130
	347-480	.23 - .16		5,000K	12,030	10,780



Clear Lens



Diffused Lens



1-800-854-0021 www.ldpi-inc.com
LDPI® is a registered trademark of LDPI, Inc. © LDPI, Inc.





Product design and specifications subject to change without notice.
Visit www.ldpi-inc.com for the most current version and photometric data. v.05.06.25

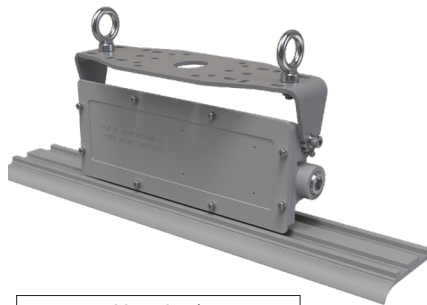
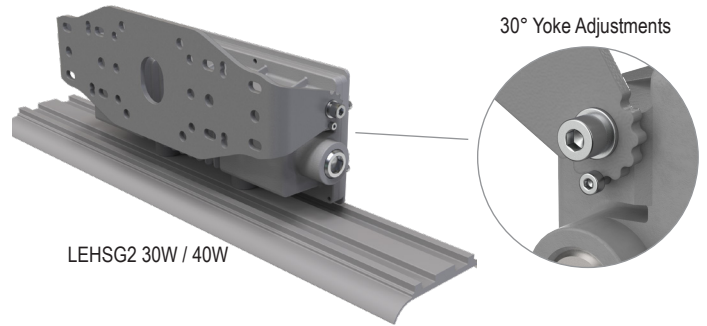
LEHSG2

HAZARDOUS LOCATION

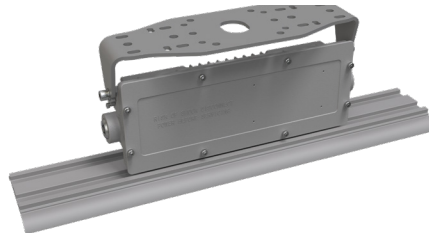
Chemical Processing • Industrial • Oil / Gas • Shipyards / Marine • Water Treatment

ACCESSORIES - (Field Installed, Order Separately)

Part Number	Description	
PC01	Pole Mount Pipe Clamp Kit Stainless Steel 1-7/8" Dia. Includes: 2 Clamps	
PC02	Pole Mount Pipe Clamp Kit Stainless Steel 2-3/8" Dia. Includes: 2 Clamps	
HK04	Hanging Mount Kit Stainless Steel M10 Eyebolts and nuts Includes: 2 Eyebolts	
UB02	Yoke Mount Bracket Powder Coated Gray SS304	
SFCB03	Stainless Steel Safety Cable Kit	
COGL-03	3ft Cord with pre-installed gland. Rated for CID2 only.	
COGL-10	10ft Cord with pre-installed gland. Rated for CID2 only.	



Hanging*



Ceiling / Wall / Pendent

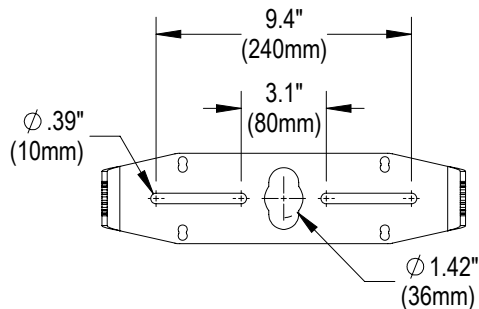


#PC01 (1-7/8" Dia.)
#PC02 (2-3/8" Dia.)

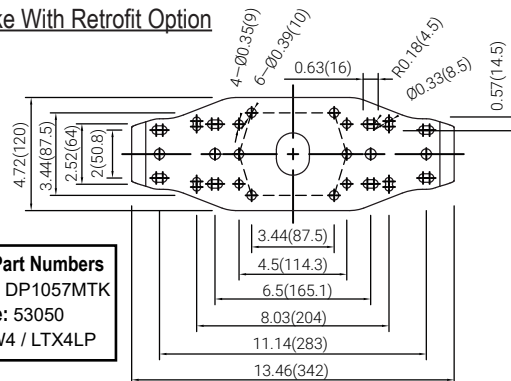
Pole*

UB02 Yoke

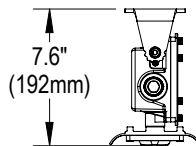
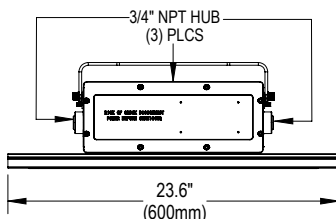
Pre-installed Yoke With Retrofit Option



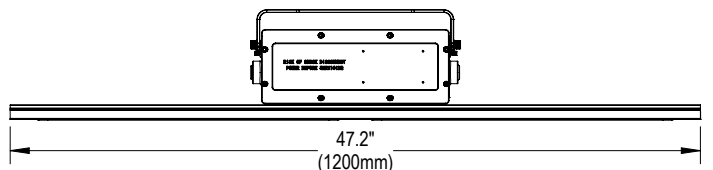
Retrofit MFG Part Numbers
Crouse Hinds: DP1057MTK
AZZ Rig-A-Lite: 53050
Dialight: LTXW4 / LTX4LP



Inches (millimeters)



5.0"
(127mm)



1-800-854-0021 www.ldpi-inc.com
LDPI® is a registered trademark of LDPI, Inc. © LDPI, Inc.

Product design and specifications subject to change without notice.
Visit www.ldpi-inc.com for the most current version and photometric data. v.05.06.25